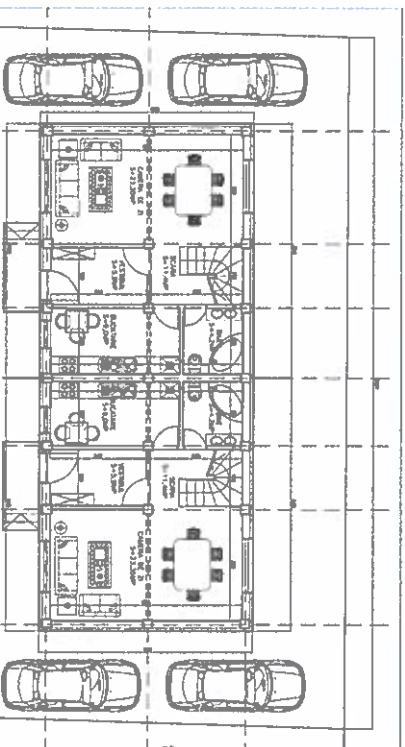
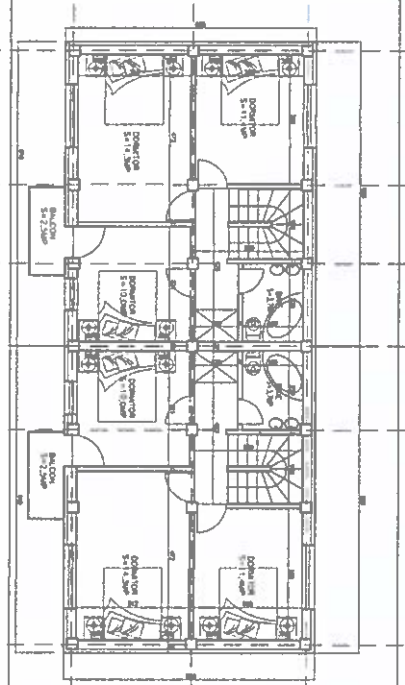


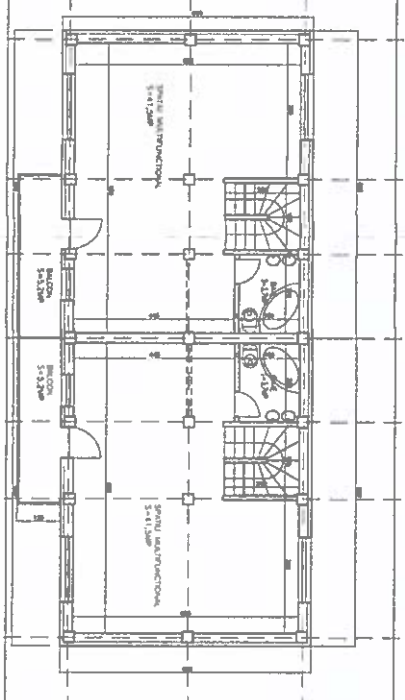
Construire imobil doua locuinte duplex
cu regim de inaltime P+2E
str. Drumul Jilavel nr.89N
sector 4 BUCUREȘTI



Alteara-261,68mp
P+2E+2E
D=11,18
Ac=118,66mp
Ar=355,99mp



Alteara-261,68mp
P+2E+2E
D=11,18
Ac=118,66mp
Ar=355,99mp



Alteara-261,68mp
P+2E+2E
D=11,18
Ac=118,66mp
Ar=355,99mp

PLAN PARTER

PLAN ETAJ 1

PLAN ETAJ 2



vedere spre nord-est



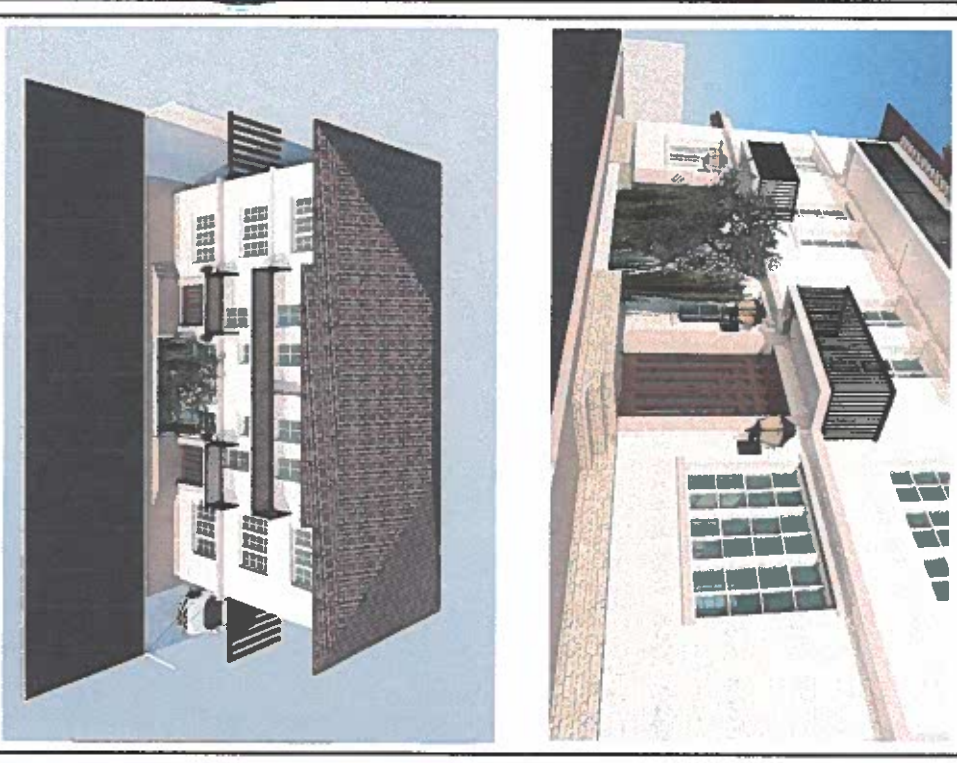
vedere spre nord-est





vedere spre nord-vest



vedere spre nord



Proiectant
DUCCAND 94 S.R.L.
J40/1416/1994

DIRECTOR	Am. CALIN BALAȘA		
ȘEF PROIECT	Am. CALIN BALAȘA		
PROIECTANT	Am. CALIN BALAȘA Am. ANDREEA CODREANU		
DATA:	Iunie 2019		
DENUMIREA PROIECTULUI	PLAN URBANISTIC DE DETALIU		
	FAZA P.U.D.		
CONTRACT	0122019		

CONTINUTUL PLANȘEI
ILUSTRARE DE TEMA DE ARHITECTURA
INTEGRARE IN SIT REAL

SCARA 1/500

NR PLANȘA
A07